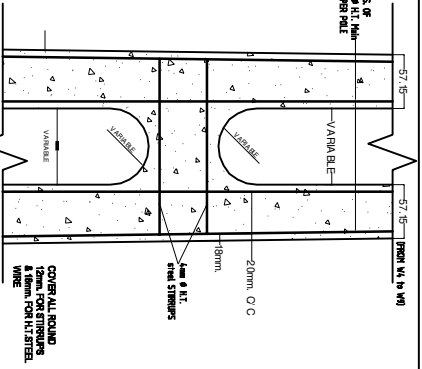
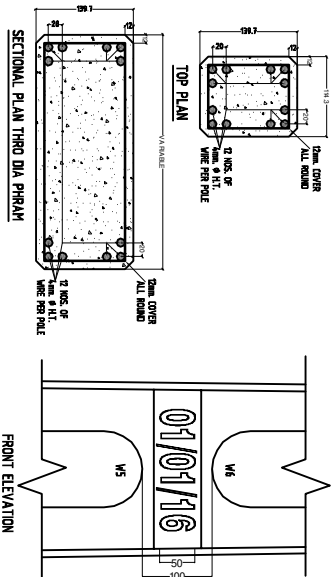


LIST OF APPROVED DRAWINGS FOR 11 KV MVCC

SR NO	TITLE	DRAWING NUMBER
1	PSC Poles	8.1
2	HT Guy Insulator	8.2
3	11 KV V-Cross Arm	8.3
4	HT Top Clamp (For PSC Pole)	8.4
5	HT Top Clamp (For RSJ/Girder Pole)	8.5
6	D- Clamp	8.6
7	Angle Bara	8.7
8	11 KV Polymer Pin Insulator	8.8
9	Earthing Coil	8.9
10	Guy Rod	8.10
11	Turn Buckle	8.11
12	I Rod	8.12
13	Guy Clamp	8.13
14	433 V Danger Notice Plate	REC/RDSS/LT/01 (As per REC Drawing)
15	Various MVCC Accessories	As Mentioned in its Technical Specification



FOR 4mm ϕ H.T. STEEL STRIRUPS

STIRUP NO FROM BOTTOM	STIRUP DIST FROM BOTTOM	WIDTH OF POLE AT POSITION	RECTANGLE DIMENSION OF STRIRUP	OVER LAP LENGTH (6d)	TOTAL LENGTH OF STRIRUP
501	24	335.9	305x110	36	866
502	83	334.2	305x110	36	866
503	143	332.6	305x110	36	866
504	560	321.0	290x110	36	836
505	626	319.2	290x110	36	836
506	1043	307.6	275x110	36	806
507	1109	305.7	275x110	36	806
508	1332	299.5	265x110	36	786
509	1478	295.5	265x110	36	786
510	2309	272.4	240x110	36	736
511	2377	270.5	240x110	36	736
512	3171	248.5	215x110	36	686
513	3239	246.6	215x110	36	686
514	4033	224.5	190x110	36	636
515	4701	222.6	190x110	36	636
516	4895	200.6	165x110	36	586
517	4963	198.7	165x110	36	586
518	5757	176.6	145x110	36	546
519	5825	174.7	145x110	36	546
520	6635	152.2	120x110	36	496
521	6898	144.9	115x110	36	486
522	7498	128.3	95x110	36	446
523	7967	115.2	85x110	36	426
524	7984	114.8	85x110	36	426
TOTAL LENGTH (MM)					16114

WINDOW FORMS

MARK	RADIUS OF CURVATURE	IN MM
R 1	80	
R 2	78	
R 3	77	
R 4	77	
R 5	88.5	
R 6	80	
R 7	76	
R 8	68	
R 9	65	
R 10	53.5	
R 11	53	
R 12	44	
R 13	41.5	
R 14	32	
R 15	29.6	
R 16	24.4	

WEIGHT OF WIRES PER POLE

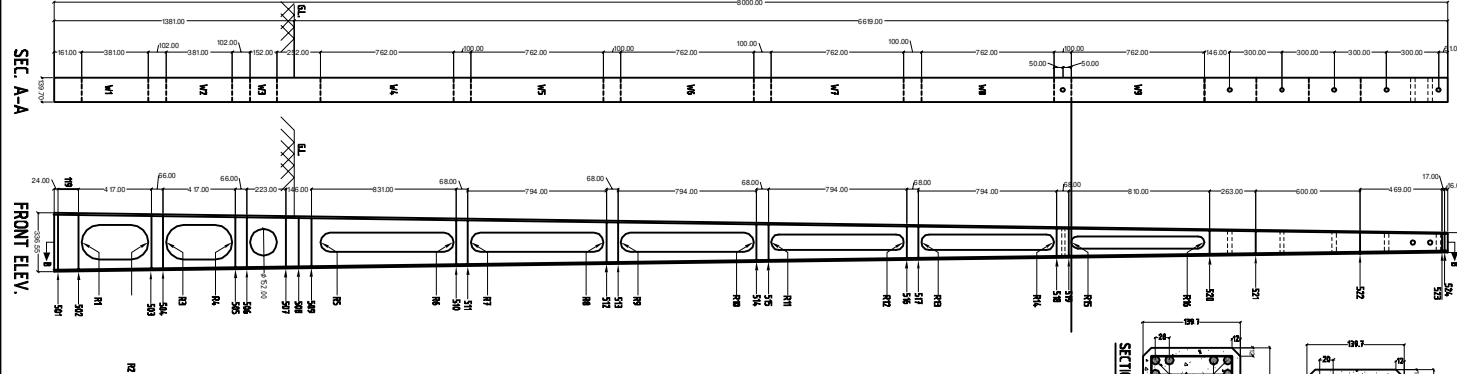
TENSION WIRE	LENGTH Mtr.	UNIT WT (kg/mtr)	TOTAL WT. (kg.)
4mm DIA. MAIN HT STEEL WIRE	96.01	0.099	9.504
4mm DIA. H.T. WIRE	16.114	0.099	1.60

NOTE :-

- 1) THE DIMENSIONS SHOWN ARE MM.
- 2) ALL STRIRUPS SHALL BE WELDED AT LAPS.
- 3) TOTAL NOS. OF STRIRUPS FOR 4mm ϕ HT STEEL WIRE SHALL BE 24nos. (SNT TO S24).
- 4) THE THICKNESS OF WEA SHOWN AS 2mm SHALL BE FROM WINDOWS W-4 TO W-6 EXCEPT BOTTOM MOST THREE WINDOWS.
- 5) APPROXIMATE WEIGHT OF POLE 48kg.
- 6) BOTTOM & TOP OF P & C POLE SHALL BE PAINTED WITH ANTI CORROSIVE BLACK EPOXY BASE BITUMINOUS PAINT.
- 7) STRIRUPS IN POLE SHALL NORMALLY BE 4mm H.T. WIRE. IN CASE MANUFACTURER DESIRES HE MAY USE M.S. BARS OF 5mm /6 mm AS SHOWN IN TABLE ABOVE.
- 8) TOTAL WEIGHT OF 4mm H.T. STEEL IS 9.505 kg PER POLE CONSIDERED INCLUSIVE OF ALL WASTAGES, DOW PEEKS & ROLLING WAREHOUSE PLUS PECKS OF GAP BETWEEN TWO POLES.
- 9) WHILE FINALISING MATERIALS ACCOUNT ACTUAL WEIGHT OF EACH COIL S TO BE CONSIDER AS PER THE TEST REPORT SUBMITTED BY THE SUPPLIER.

SEC. A-A

FRONT ELEV.

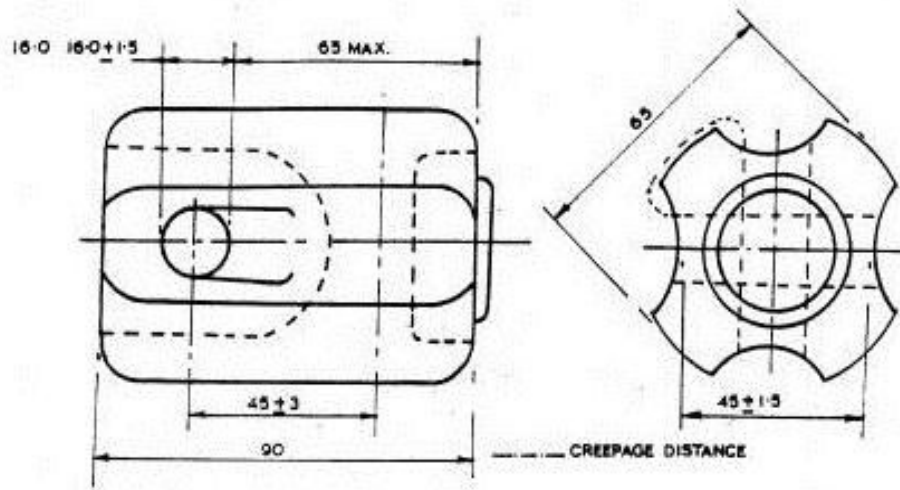


PRESTRESSED CONCRETE POLE-8M/200 KG.
SHOWING DETAILED DIMENSION
FOR READY MADE POLE SUPPLY

DT.

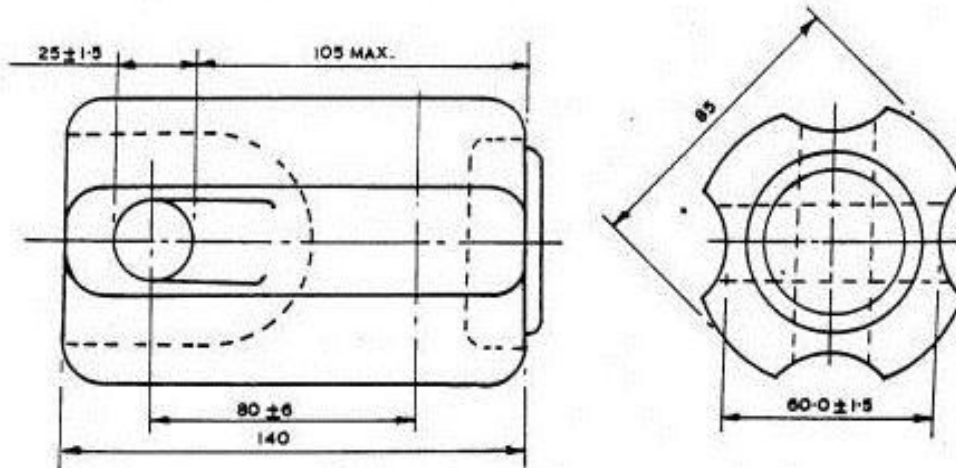
PG/VL/PSC Pole/8 MTR/C-583

R/01



चित्र-१. तान रस्सी विकृतिसह विद्युतरोधक - संज्ञा ए.

FIG. 1. GUY STRAIN INSULATOR (DESIGNATION- A)



चित्र-२ तान रस्सी विकृतिसह विद्युतरोधक - संज्ञा सी.

FIG. 2. GUY STRAIN INSULATOR (DESIGNATION - C)

ALL DIMENSIONS ARE IN mm

Technical drawing of a square box with a gabled roof, showing dimensions and construction details. The drawing includes a top view, a side elevation, and a detail of the corner joint.

Top View Dimensions:

- Overall width: 1070
- Overall depth: 990
- Distance from side wall to centerline of roof slope: 316
- Distance from centerline to corner: 107
- Corner radius: 40


Side Elevation Dimensions:

- Overall height: 310
- Distance from side wall to centerline of roof slope: 316
- Distance from centerline to corner: 107
- Corner radius: 40
- Roof slope length: 439
- Distance from centerline to corner: 80

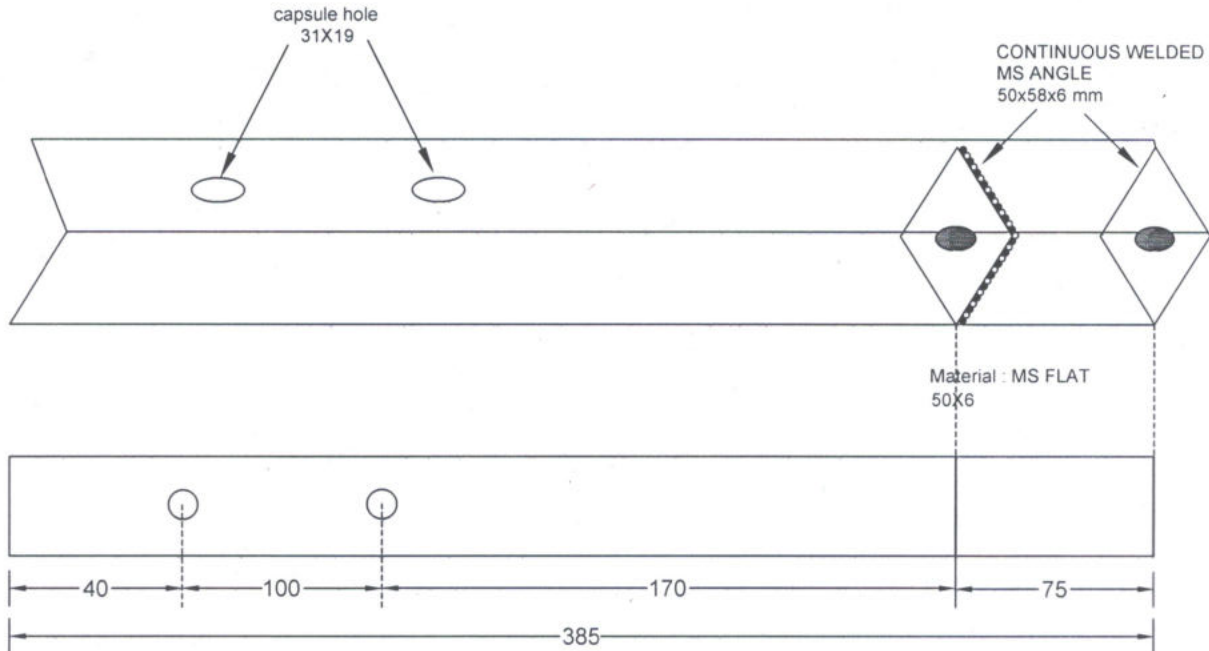
Construction Details:

- Continuous welding is indicated at the corners of the box.
- The distance between the centerlines of the roof slopes is labeled as $X = 200$.

44-377
Addl. Chief Engineer (Project)
PGVCL, Corp. Office
Rajkot.

No.	Material Description	Length (mm)	Min. Weight	Remarks	 Paschim Gujarat Vij Company Limited Laxminagar, off nana Mava Main Road, Rajkot
1.	MS Angle - 65X65X6	1568	8.44 kg	Total weight of finished goods	
Notes - 1. All Dimensions are in mm unless or otherwise specified & illustration is not to be scale. 2. MS Angle - 65X65X6 is as per IS : 2062, 1852 & 808 with respective amendments & as per PGVCL specifications. 3. Two coats of ISI quality red-oxide, approved by PGVCL is to be applied.					Item Description :- 11 KV LINE V- CROSS ARM (OF M.S.ANGLE)
					Item Code :- 2609000034
					Drawing No :- PGVCL/PROJECT/11 KV V-CROSS ARM/22

HT TOP CLAMP (FOR PSC POLE) FROM MS ANGLE




Remarks :-

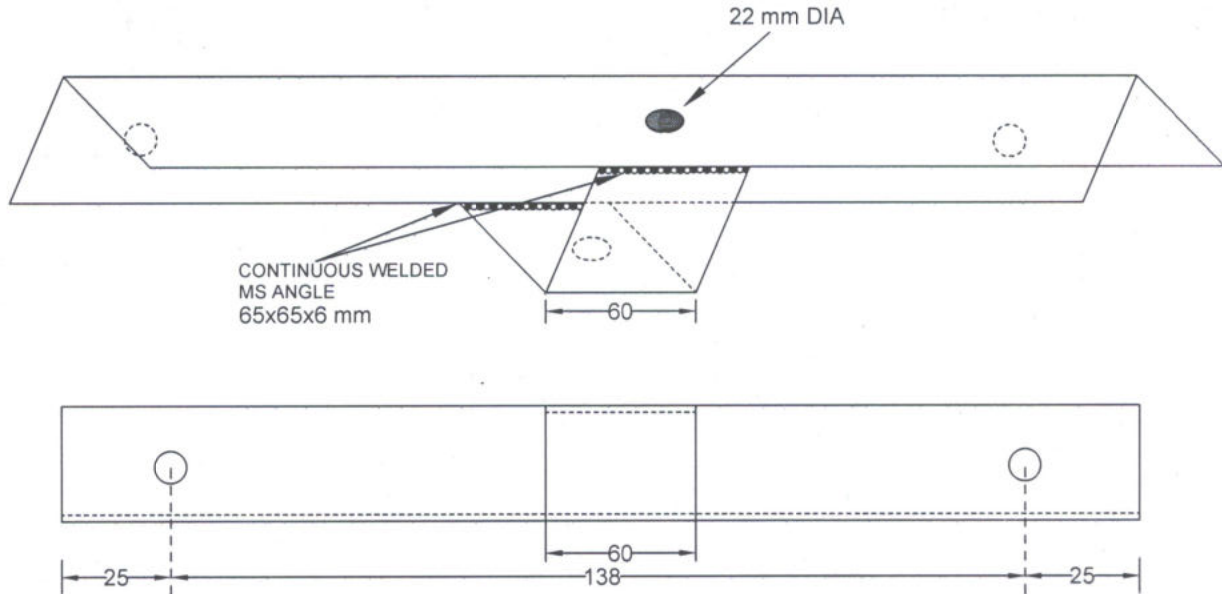
- Holes :- 18 mm Dia
- Holes :- 22 mm Dia

- Tolerance in total length :- ± 2 mm.

[Signature]
Addl. Chief Engineer (Project)
PGVCL, Corp. Office
Rajkot.

No.	Material Description	Length (mm)	Min. Weight	Remarks	 Paschim Gujarat Vij Company Limited Laxminagar, off nana Mava Main Road, Rajkot
1.	MS Angle - 65X65X6	385	2.14 kg		
2.	MS Flat - 50X6	116	0.23 kg		
	Total Weight of finished goods		2.38 kg		
Notes :- 1. All Dimensions are in mm unless or otherwise specified & illustration is not to be scale. 2. MS Angle - 65X65X6 & MS Flat - 50X6 is as per IS : 2062, 1852 & 808 with respective amendments & as per PGVCL specifications. 3. Two coats of ISI quality red-oxide, approved by PGVCL is to be applied.					Item Description :- HT TOP CLAMP (OF M.S.ANGLE)
					Item Code :- 2601000084
					Drawing No :- PGVCL/PROJECT/HT TOP CLAMP/ 23-A

HT TOP PIECE (FOR MS GIRDER POLE) FROM MS ANGLE




Remarks :-

○ Holes :- 18 mm Dia

● Holes :- 22 mm Dia

- Tolerance in total length :- ± 2 mm.

Addl. Chief Engineer (Project)
PGVCL, Corp. Office
Rajkot.

No.	Material Description	Length (mm)	Min. Weight	Remarks	 Paschim Gujarat Vij Company Limited Laxminagar, off nana Mava Main Road, Rajkot
1.	MS Angle - 65X65X6	310	1.69 kg	Total weight of finished goods	
					Item Description :- HT TOP PIECE (FOR RSJ POLE) (OF M.S.ANGLE)
					Item Code :- 2601000088

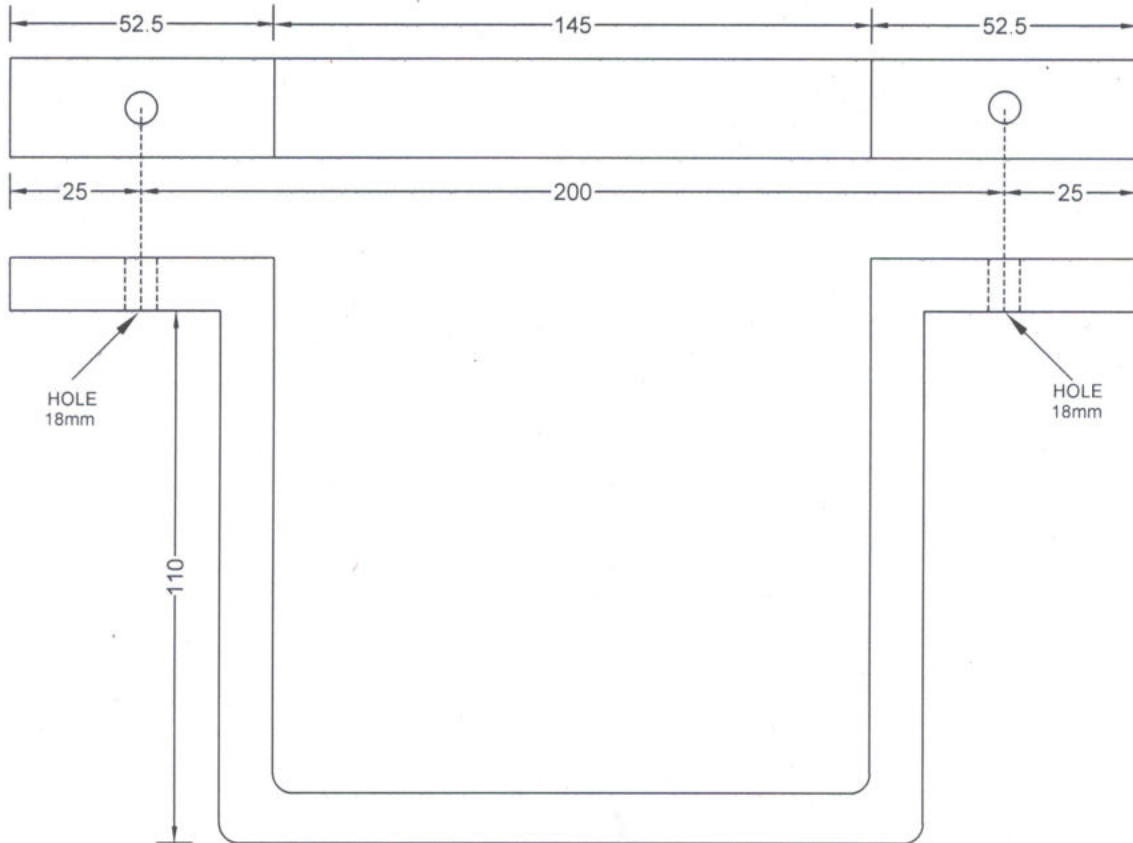
Notes :-

- All Dimensions are in mm unless or otherwise specified & illustration is not to be scale.
- MS Angle - 65X65X6 is as per IS : 2062, 1852 & 808 with respective amendments & as per PGVCL specifications.
- Two coats of ISI quality red-oxide, approved by PGVCL is to be applied.

Drawing No :- PGVCL/PROJECT/HT TOP PIECE
FOR RSJ POLE/23-B

D - CLAMP(FOR PSC POLE)

FROM MS FLAT 50x6 mm



Remarks :-

○ Holes :- 18 mm Dia

- Tolerance in total length :- ± 2 mm.

[Signature]
Addl. Chief Engineer (Project)
PGVCL, Corp. Office
Rajkot.

No.	Material Description	Length (mm)	Min. Weight	Remarks
1.	MS Flat - 50X6	470	1.05 kg	Total weight of finished goods

 **Paschim Gujarat Vij Company Limited**
Laxminagar, off nana Mava Main Road, Rajkot

Item Description :- D - CLAMP
(OF M.S.FLAT)

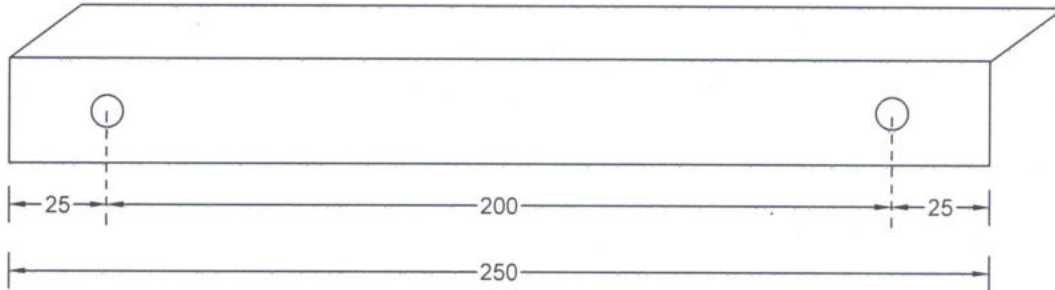
Item Code :- 2601000053

Notes :-

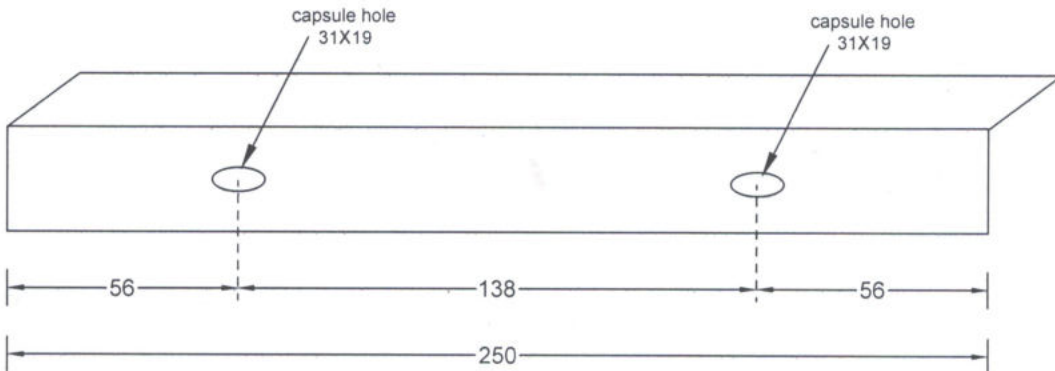
1. All Dimensions are in mm unless or otherwise specified & illustration is not to be scale.
2. MS Flat - 50X6 is as per IS : 2062, 1852 & 808 with respective amendments & as per PGVCL specifications.
3. Two coats of ISI quality red-oxide, approved by PGVCL is to be applied.

Drawing No :- PGVCL/PROJECT/D-CLAMP/24

ANGLE BARA
FROM MS ANGLE 65X65X6 OR 50X50X6
(For PSC Pole)



ANGLE BARA
FROM MS ANGLE 65X65X6 OR 50X50X6
(For Girder Pole)




Remarks :-

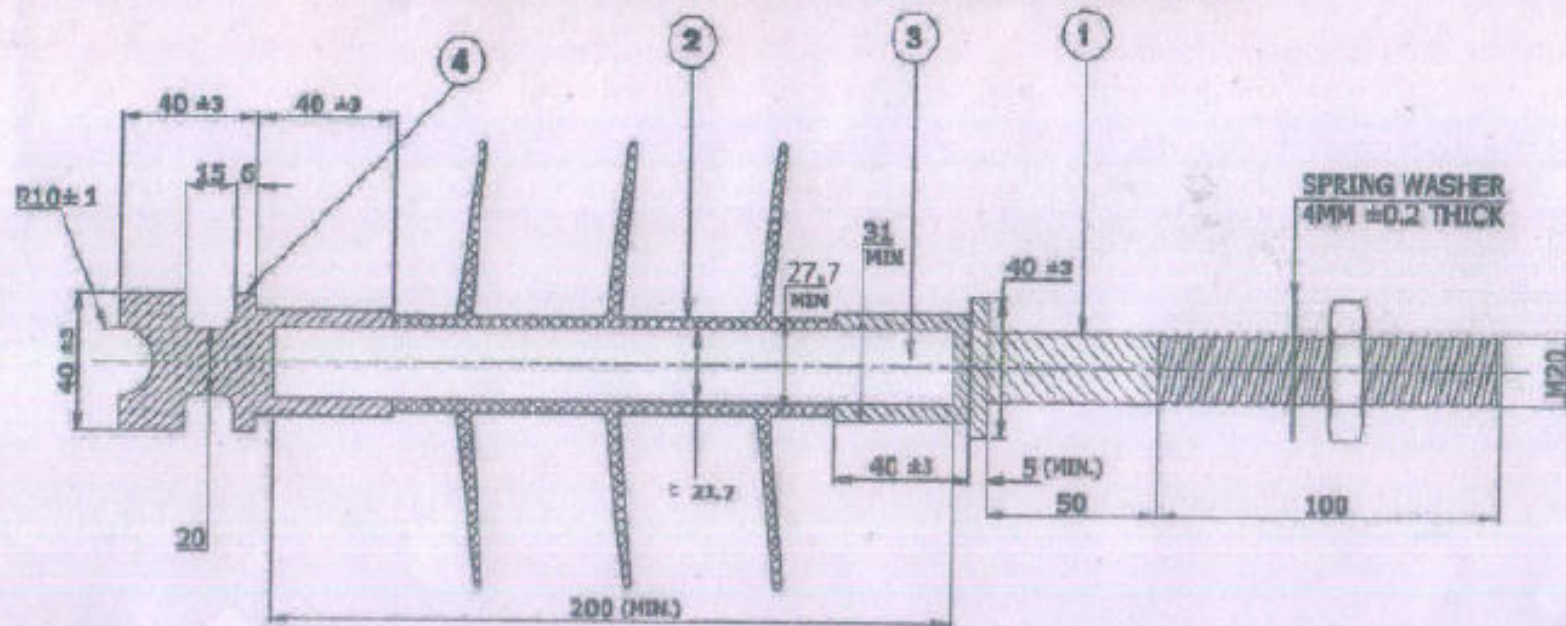
○ Holes :- 18 mm Dia

- Tolerance in total length :- ± 2 mm.

[Signature]
Addl. Chief Engineer (Project)
PGVCL, Corp. Office
Rajkot.

No.	Material Description	Length (mm)	Min. Weight	Remarks	 Paschim Gujarat Vij Company Limited Laxminagar, off nana Mava Main Road, Rajkot
1.	MS Angle - 65X65X6	250	1.38 kg	Total weight of finished goods	
OR					
1.	MS Angle - 50X50X6	250	1.07 kg		
					Item Description :- ANGLE BARA (OF M.S.ANGLE)
Notes :- 1. All Dimensions are in mm unless or otherwise specified & illustration is not to be scale. 2. MS Angle - 65X65X6 & 50X50X6 is as per IS : 2062, 1852 & 808 with respective amendments & as per PGVCL specifications. 3. Two coats of ISI quality red-oxide, approved by PGVCL is to be applied.					Item Code :- 2609000058
					Drawing No :- PGVCL/PROJECT/BACK PIECE/26

11KV, 5KN, 340 Creepage Distance, PIN Type Composite (Polymer) Insulator

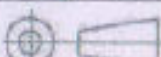


NOTE: TOLERANCE AS PER IS: 61109

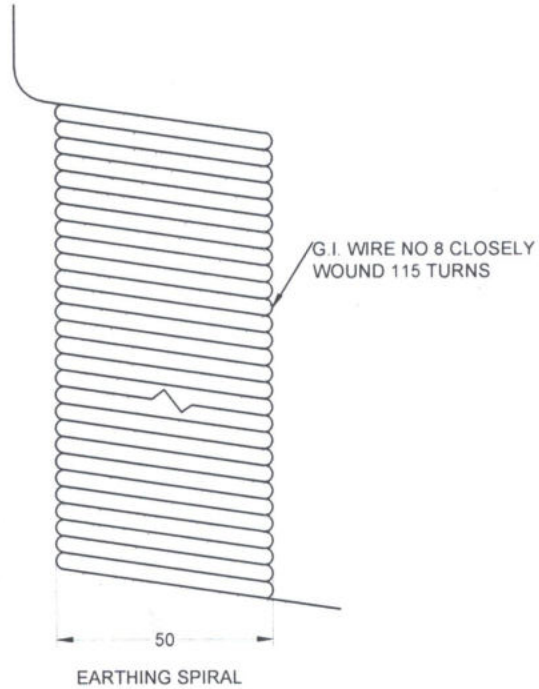
MECHANICAL FAILING LOAD (MIN.)	≥ 5 KN (SML)
RATED VOLTAGE	≥ 11KV
NUMBER OF SHEDS	≥ 3 (MIN.)
DRY ARCHING DISTANCE	≥ 165 mm (MIN.)
MIN. CREEPAGE DISTANCE	≥ 340 mm (MIN.)
TOP FITTINGS	≥ SGL / MCL / FORGED STEEL
BOTTOM FITTING	≥ FORGED STEEL SINGLE PIECE ONLY
FRP ROD DIA.	≥ 21.7 mm
OUTER DIA. OF FRP ROD WITH SHEATH	≥ 27.7 mm (MIN.)
LENGTH OF FRP ROD	≥ 200 mm (MIN.)
HIGHEST SYSTEM VOLTAGE	≥ 12 KV
DRY POWER FREQUENCY WITHSTAND VOLTAGE	≥ 70 KV
WET POWER FREQUENCY WITHSTAND VOLTAGE	≥ 45 KV
DRY LIGHTNING IMPULSE WITHSTAND VOLTAGE	≥ 110 KV
VISIBLE DISCHARGE VOLTAGE	≥ 9 KV
APPLICABLE STANDARD	≥ IS: 61109-2006 (With Amendment, if any)
DIA. OF WEATHER SHED	≥ 90 mm
WEIGHT OF INSULATOR	≥ 1.2 KG (APPROX.)

- (1) Bottom End Metal Fitting
- (2) Silicon Housing
- (3) FRP Rod
- (4) Top End Metal Fitting

Chief Engineer (Material)
PGVCL, Corporate Office
Rajkot.

TITLE: 11 KV, 5KN PIN TYPE COMPOSITE (POLYMER) INSULATOR	SCALE: NTS	All Dimensions Are in mm.	APPROVED BY:
			
DRG NO.: 11KV/SHI-320CD-PIN/Polymer			


EARTHING COIL FROM G.I.WIRE NO. 8



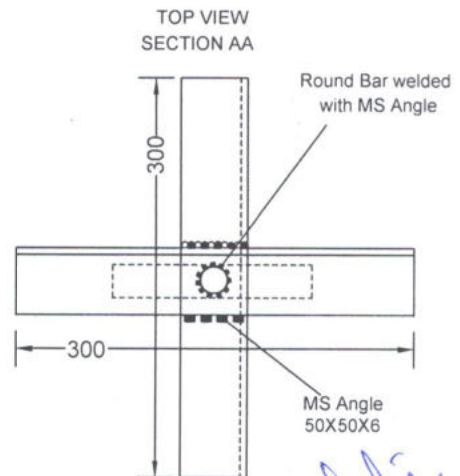
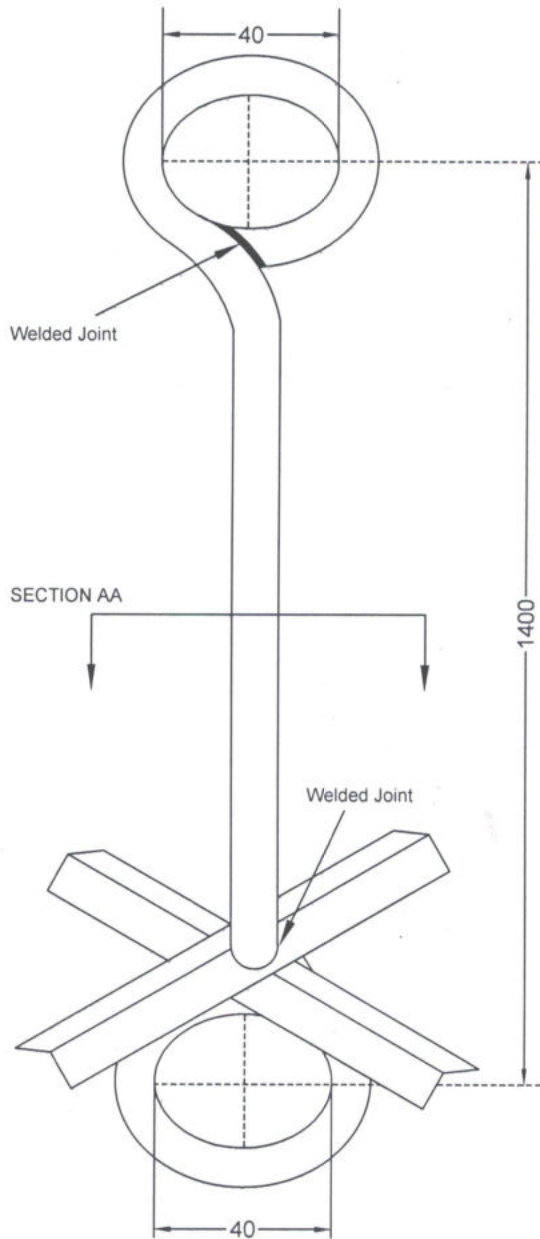
Remarks :-

- Tolerance in total length :- ± 2 mm.

Addl. Chief Engineer (Project)
PGVCL, Corp. Office
Rajkot.

No.	Material Description	Length (mm)	Min. Weight	Remarks	 Paschim Gujarat Vij Company Limited Laxminagar, off nana Mava Main Road, Rajkot
1.	G.I.Wire No. 8	17500	1.70 kg	Total weight of finished goods	
Notes :-					Item Description :- EARTHING COIL (OF G.I.WIRE NO. 8)
1. All Dimensions are in mm unless or otherwise specified & illustration is not to be scale.					Item Code :- 0901000024
2. G.I.Wire No. 8 is as per IS : 280 with respective amendments & as per PGVCL specifications.					Drawing No :- PGVCL/PROJECT/EARTHING COIL/28

GUY ROD FROM MS ANGLE & ROUND BAR



Remarks :-

- Tolerance in total length of Rod :- ± 2 mm.
- Tolerance in total length of MS Angle :- ± 2 mm.

Addl. Chief Engineer (Project)
PGVCL, Corp. Office
Rajkot.

No.	Material Description	Length (mm)	Min. Weight	Remarks
1.	MS Angle - 50X50X6	600	2.57 kg	
2.	MS Round Bar - 16 mm	1700	2.57 kg	
	Total Weight of finished goods		5.14 kg	



Paschim Gujarat Vij Company Limited
Laxminagar, off nana Mava Main Road, Rajkot

Item Description :- GUY ROD
(FROM M S ANGLE & ROUND BAR)

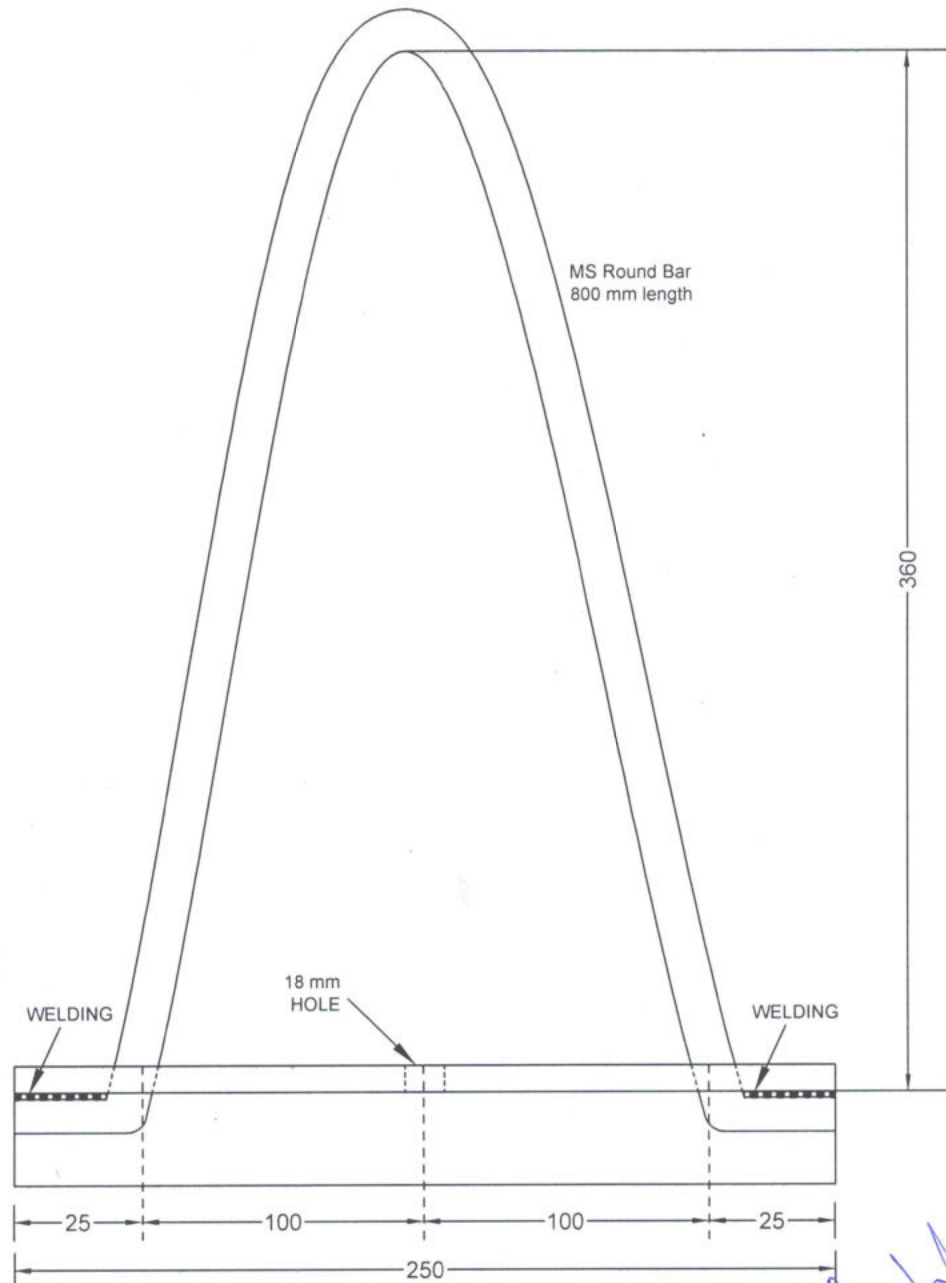
Item Code :- 2614000003

Drawing No :- PGVCL/PROJECT/GUY ROD/30

Notes :-

1. All Dimensions are in mm unless or otherwise specified & illustration is not to be scale.
2. MS Angle - 50X50X6 & MS Round Bar is as per IS : 2062, 1852 & 808 with respective amendments & as per PGVCL specifications.
3. Two coats of ISI quality red-oxide, approved by PGVCL is to be applied.


TURN BUCKLE FROM MS ANGLE & ROUND BAR



Remarks :-

- Tolerance in total length of Round bar :- ± 2 mm.
- Tolerance in total length of MS Angle :- ± 2 mm.

Addl. Chief Engineer (Project)
PGVCL, Corp. Office
Rajkot.

No.	Material Description	Length (mm)	Min. Weight	Remarks	 Paschim Gujarat Vij Company Limited Laxminagar, off nana Mava Main Road, Rajkot
1.	MS Angle - 50X50X6	250	1.08 kg		
2.	MS Round Bar - 16 mm	800	1.23 kg		
	Total Weight of finished goods		2.31 kg		
					Item Description :- TURN BUCKLE (FROM M.S ANGLE & ROUND BAR)

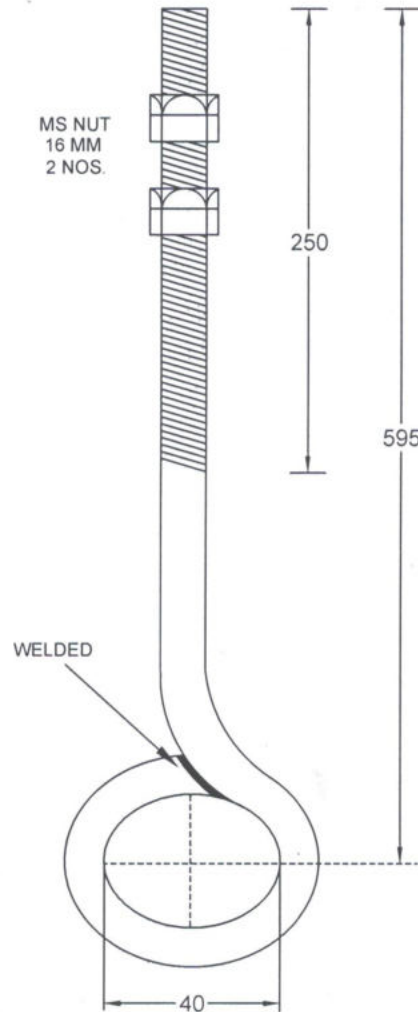
Notes :-

1. All Dimensions are in mm unless or otherwise specified & illustration is not to be scale.
2. MS Angle - 50X50X6 & MS Round Bar is as per IS : 2062, 1852 & 808 with respective amendments & as per PGVCL specifications.
3. Two coats of ISI quality red-oxide, approved by PGVCL is to be applied.

Item Code :- 2614000009

Drawing No :- PGVCL/PROJECT/TURN BUCKLE/
31


I ROD FROM MS ROUND BAR



Remarks :-

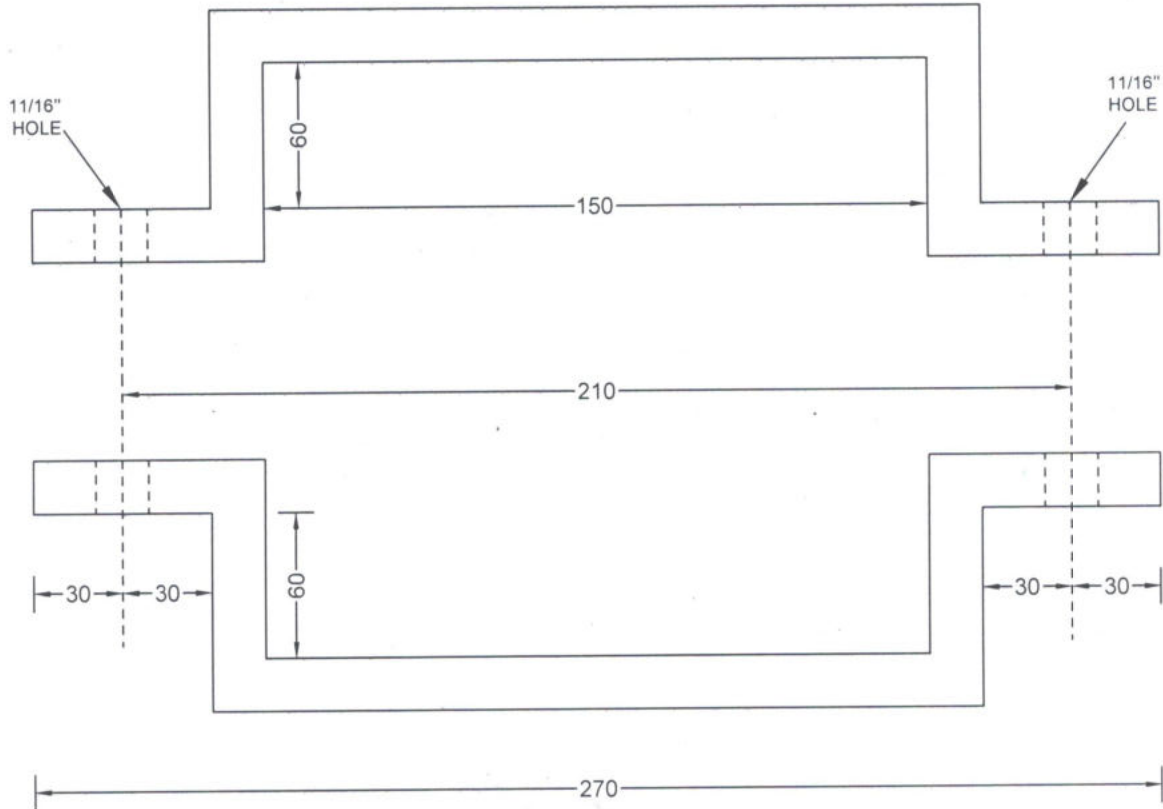
- Tolerance in total length :- ± 2 mm.

Addl. Chief Engineer (Project)
PGVCL, Corp. Office
Rajkot.

No.	Material Description	Length (mm)	Min. Weight	Remarks	 Paschim Gujarat Vij Company Limited Laxminagar, off nana Mava Main Road, Rajkot
1	MS Round Bar - 16 mm Dia	650	0.93 kg	weight of finished goods with nut	
Notes :- 1. All Dimensions are in mm unless or otherwise specified & illustration is not to be scale. 2. MS Round Bar - 16 mm Dia is as per IS : 2062, 1852 & 808 with respective amendments & as per PGVCL specifications. 3. Two coats of ISI quality red-oxide, approved by PGVCL is to be applied.					Item Description :- I - ROD (FROM MS ROUND BAR)
					Item Code :- 2614000012
					Drawing No :- PGVCL/PROJECT/I-ROD/32

GUY - CLAMP


FROM MS FLAT 50x6 mm



Remarks :-

- Tolerance in total length :- ± 2 mm.

Addl. Chief Engineer (Project)
PGVCL, Corp. Office
Rajkot.

No.	Material Description	Length (mm)	Min. Weight	Remarks	 Paschim Gujarat Vij Company Limited Laxminagar, off nana Mava Main Road, Rajkot
1.	MS Flat - 50X6 - 2 pieces of 390 mm each	780	1.70 kg	weight of finished goods per pair	
					Item Description :- GUY CLAMP (OF M.S.FLAT)
					Item Code :- 2601000069
					Drawing No :- PGVCL/PROJECT/GUY CLAMP/33

Notes -

- All Dimensions are in mm unless or otherwise specified & illustration is not to be scale.
- MS Flat - 50X6 is as per IS : 2062, 1852 & 808 with respective amendments & as per PGVCL specifications.
- Two coats of ISI quality red-oxide, approved by PGVCL is to be applied.